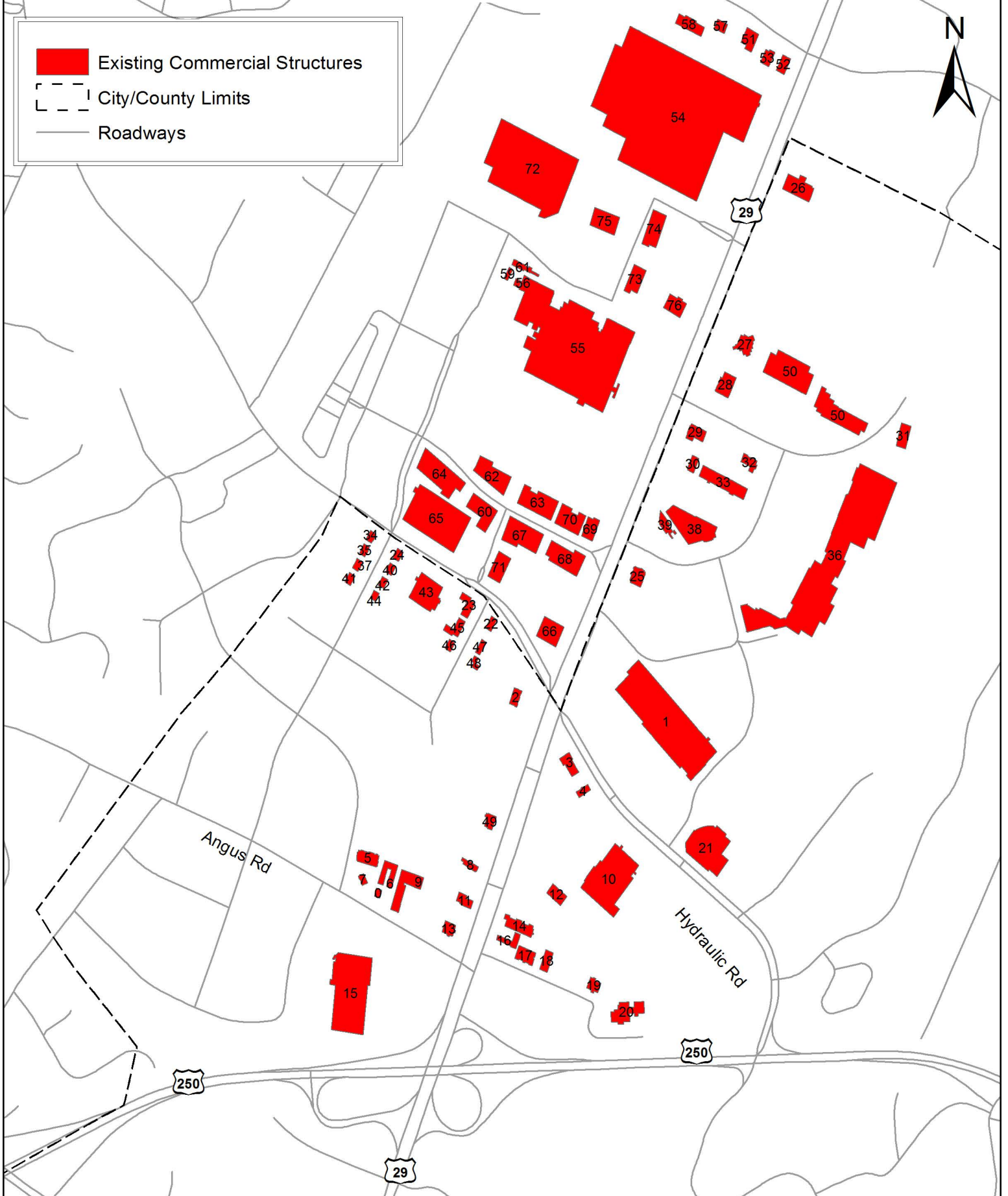


# Existing Commercial Structures in Meadows neighborhood and their Areas

- Existing Commercial Structures
- City/County Limits
- Roadways



Area of Commercial Properties in Hydraulic neighborhood

**Number** **Area in Sq.Ft**

0	1,373
1	127,124
2	3,789
3	5,790
4	2,551
5	7,305
6	7,687
7	1,709
8	2,635
9	14,537
10	58,933
11	4,146
12	5,888
13	3,936
14	8,795
15	74,768
16	4,698
17	6,828
18	4,629
19	3,850
20	13,241
21	40,888
22	2,444
23	5,407
24	2,067
25	5,927
26	13,602
27	7,446
28	8,638
29	6,262
30	3,195
31	6,549
32	4,388
33	16,675
34	1,998
35	2,000
36	192,077
37	1,995
38	28,961
39	4,625
40	1,929
41	2,154
42	1,793

43	21,587
44	1,545
45	5,184
46	1,849
47	2,080
48	1,754
49	3,632
50	60,539
51	6,833
52	4,206
53	4,016
54	455,650
55	244,042
56	1,177
57	3,133
58	8,574
59	1,418
60	15,732
61	3,544
62	18,721
63	20,628
64	29,113
65	66,932
66	13,135
67	23,549
68	20,014
69	7,079
70	14,774
71	10,494
72	148,075
73	9,919
74	14,171
75	13,758
76	8,530
<b>Total</b>	<b>1,990,619</b>